

# LIFT E

# ECO285 (2.82t x 1.4m)



- Zero Emissions
- Lithium-ion Battery
- Shorten Charging Time
- Charging During Operation
- Same operation speeds as MC285
- Light Weight
- White rubber tracks as standard

## Crane Specifications

Crane capacity	capacity:	2.82 t x 1.4m
Max working radius	max:	8.205m x 0.15t
Max lifting height (on ground)	approx:	8.7m
Max lifting height (underground)	approx:	-10.1m (4 falls)
Dimensions		2800mm x 750mm x 1470mm
Machine weight		2000kg
Travel speed		0-2.2km/h
Ground pressure		0.512 kgf / cm <sup>2</sup>
Battery system	Type	Lithium-ion
	5 hour rate capacity	DC48V - 135Ah
	Input voltage / current	Single phase AC200V/16A
	Charging time	80%: 2 hour 20 min / 100% 3 hour 30 min
	Continuous operation time	By travelling: High speed 2 hour 15 min
	Charging during operation	Available
	Rated output	Variable 7.5 kW AC30V at 2500min
Motor		Black rubber tracks, single fall hook, 850kg searcher hook
Options		

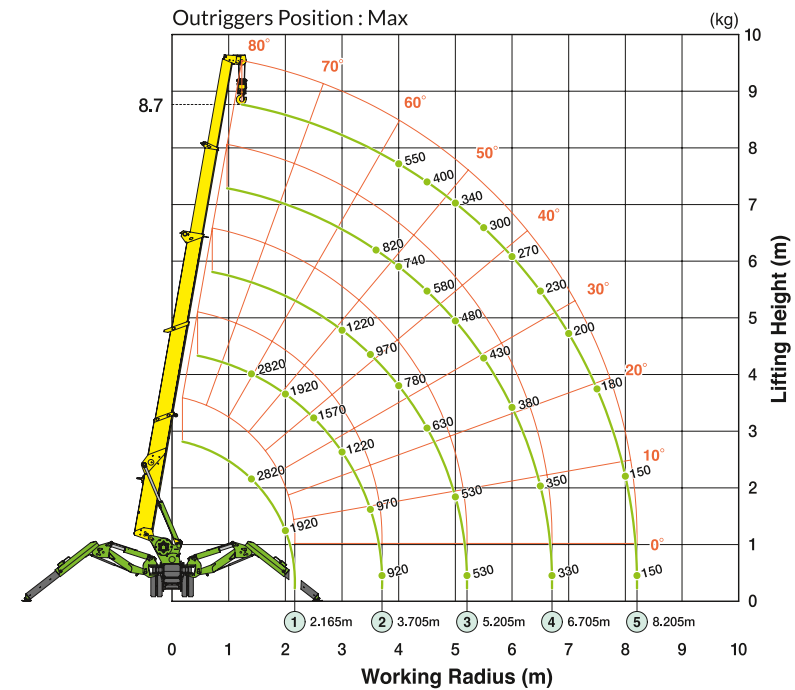


Paddle Lever  
Wireless Remote Control

Programmable  
Moment Limiter

850kg Searcher Hook  
as option

## Working Range



### First Stage

#### FIRST STAGE EXTENDED 2.53m/4.075m BOOM LENGTH

Working radius m	<1.4	1.5	2	2.5	3	3.5	3.7
Max extended kg	2820	2520	1920	1570	1220	970	920
Min extended kg	1720	1720	1070	630	520	390	350

### Second Stage

#### SECOND STAGE EXTENDED 5.575m BOOM LENGTH

Working radius m	<3	3.5	4	4.5	5	5.2
Max extended kg	1220	970	780	630	530	530
Min extended kg	510	410	330	280	200	200

### Third Stage

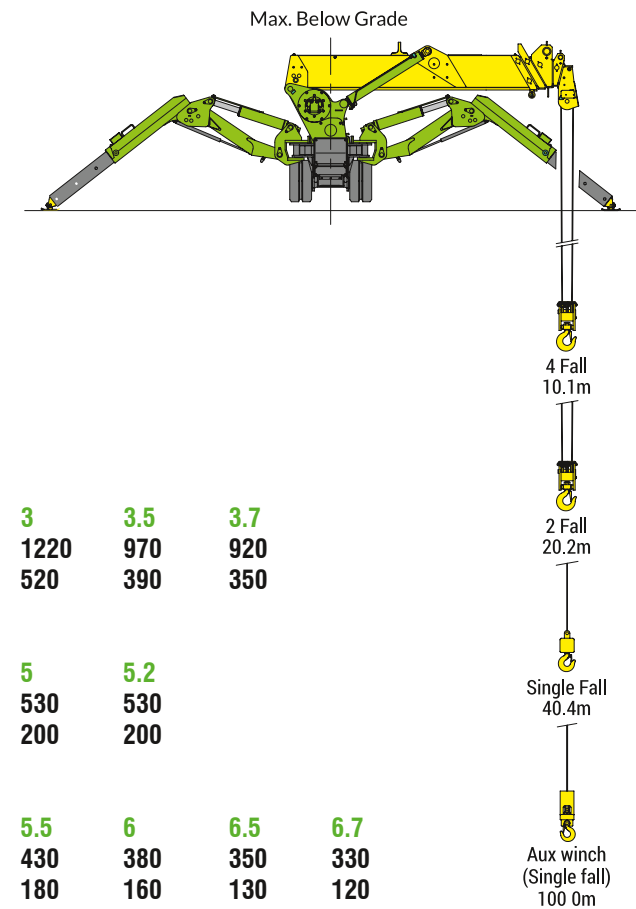
#### THIRD STAGE EXTENDED 7.075m BOOM LENGTH

Working radius m	<3.6	4	4.5	5	5.5	6	6.5	6.7
Max extended kg	820	740	580	480	430	380	350	330
Min extended kg	400	330	280	230	180	160	130	120

### Fourth Stage

#### FOURTH STAGE EXTENDED 8.575m BOOM LENGTH

Working radius m	<4	4.5	5	5.5	6	6.5	7	7.5	8	8.2
Max extended kg	550	400	340	300	270	230	200	180	150	150
Min extended kg	330	280	230	180	160	130	100	80	70	60



## Dimensions

