

MAEDAMC815C (8.0t x 2.4m)



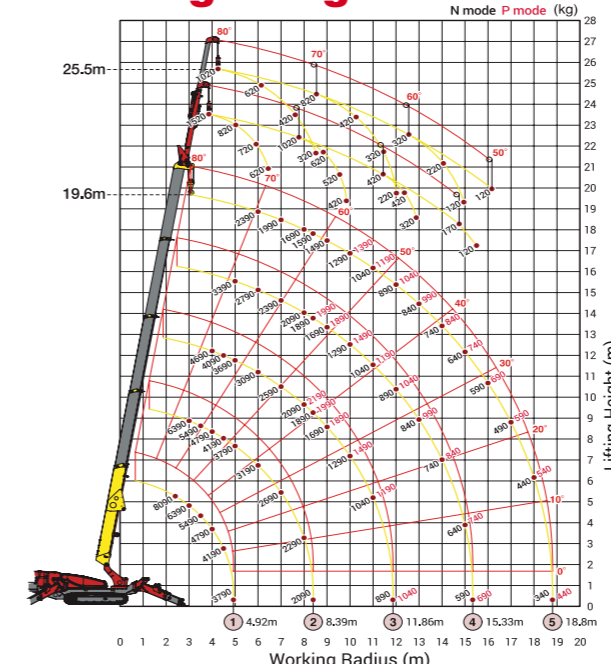
- Power Lifting Mode
- Joystick Type Radio Remote Control
- Self Leveling Function
- Auto-Crane Stow Function
- Slew Restriction Device
- 1.5t Hydraulic Type Optional Fly Jib

Crane Specifications

Crane capacity	capacity:	8.0t x 2.4m (6 fall hook block) 6.0t x 2.4m (4 fall hook block)
Max working radius	max:	18.8m x 300kg
Max lifting height	approx:	19.6m x 2900kg (25.5m x 1500kg with Fly Jib)
Rope length	max:	21.0m 6 falls, 34.0m 4 falls, 68.0m 2 falls, 136.0m 1 fall
Dimensions	folded:	5,900mm x 1,670mm x 2,490mm
Weight	unladen:	9,700kg
Point loadings	Due to the many variables involved, point loadings are only available on request	
Hook speed	approx:	18m / min (4 falls, 4th layer)
Telescopic system	boom length:	5.52m - 19.40m
	telescoping speed:	11.7m / 41.3sec
	boom type:	Fully automatic 5 section pentagonal telescopic boom
Derricking angle/speed	approx:	0° - 80° / 17 sec
Slewing angle/speed	approx:	360° continuous / 2.5 rpm
Traction system	drive:	Hydraulic motor driven, stepless speed changer
	travel speed:	3.3km/h
	gradability:	20°
	track ground length:	2275mm
	track ground pressure:	0.49hg/cm ²
	track width:	400mm
Engine	manufacturer:	Maeda Cranes
	fuel:	Diesel / Electric
	maximum output:	30.5KW, 2500RPM
	starting method:	Electric
	tank capacity:	70L
Standard equipment	Overwind protection, Load indicator, Hydraulic safety valve, Wire Rope latch, Level, Machine body inclination alarm, EMO switch, Outrigger interlock device, MSOS, Moment limiter, Rotary lamp, Slew restriction system.	
Optional equipment	Rubber pads, Single fall hook, Searcher hook (1.0t), Hydraulic type fly jib (1.5t)	



Working Range



THE VALUES BELOW ARE FOR A 6 FALL HOOK BLOCK

Stage	Boom Length	Working radius	3.0	3.5	4.0	4.5	4.92	5.0	6.0	7.0	8.0	8.39	9.0	10.0	11.0	11.86	
First Stage	FIRST STAGE EXTENDED 2.4 - 4.92M BOOM LENGTH	Max-extended	8,090	7,690	6,390	5,490	4,790	4,190	3,790								
		Mid-extended	6,290	6,290	6,290	5,290	4,590	3,990	3,690								
		Min-extended	6,190	6,190	6,190	5,290	4,590	3,990	3,090								
		Working radius	m	up to 2.4	2.5	3.0	3.5	4.0	4.5	4.92							
Second Stage	SECOND STAGE EXTENDED 4.92 - 8.39M BOOM LENGTH	Max-extended	6,390	6,390	6,390	5,490	4,790	4,190	3,790	3,190	2,690	2,090					
		Mid-extended	6,290	6,290	6,290	5,290	4,590	3,990	3,690	3,590	2,990	2,090	1,690	1,490			
		Min-extended	6,190	6,190	6,190	5,290	4,590	3,990	3,090	3,090	2,190	1,490	1,190	1,090			
		Working radius	m	up to 2.4	2.5	3.0	3.5	4.0	4.5	4.92	5.0	6.0	7.0	8.0	8.39		
Third Stage	THIRD STAGE EXTENDED 8.39 - 11.86M BOOM LENGTH	Max-extended	4,690	4,690	4,690	4,690	4,690	4,090	3,690	3,090	2,590	2,090	1,890	1,690	1,290	1,040	890
		Mid-extended	4,690	4,690	4,690	4,690	4,690	3,990	3,690	3,590	2,990	2,090	1,690	1,390	990	790	590
		Min-extended	4,690	4,690	4,690	4,690	4,690	3,990	3,090	3,090	2,190	1,490	1,190	1,090	990	690	490
		Working radius	m	up to 2.4	2.5	3.0	3.5	4.0	4.5	4.92	5.0	6.0	7.0	8.0	8.39	9.0	10.0
Fourth Stage	FOURTH STAGE EXTENDED 11.86 - 15.33M BOOM LENGTH	Max-extended	3,390	3,390	3,390	3,390	3,390	3,390	3,390	2,790	2,390	2,090	1,890				
		Mid-extended	3,290	3,290	3,290	3,290	3,290	3,290	3,290	2,690	2,290	2,090	1,690	1,490			
		Min-extended	3,090	3,090	3,090	3,090	3,090	3,090	3,090	3,090	2,190	1,490	1,190	1,090			
		Working radius	m	up to 9.0	10.0	11.0	11.86	12.0	13.0	14.0	15.0	15.33					
Fifth Stage	FIFTH STAGE EXTENDED 15.33 - 18.8M BOOM LENGTH	Max-extended	2,390	2,390	2,390	2,390	2,390	2,390	1,990	1,690	1,590	1,490	1,290	1,040	890	890	840
		Mid-extended	2,290	2,290	2,290	2,290	2,290	2,290	1,990	1,690	1,490	1,390	990	790	590	540	
		Min-extended	2,190	2,190	2,190	2,190	2,190	2,190	1,490	1,190	1,090	990	690	540	490	440	
		Working radius	m	14.0	15.0	15.33	16.0	17.0	18.0	18.8							
	Max-extended	kg	740	640	590	590	490	440	340								
	Mid-extended	kg	490	440	390	390	340	290	240								
	Min-extended	kg	390	340	290	290	240	190	140								

Dimensions

