

MAEDAMK-3053C ECO (2.8t x 1.8m)



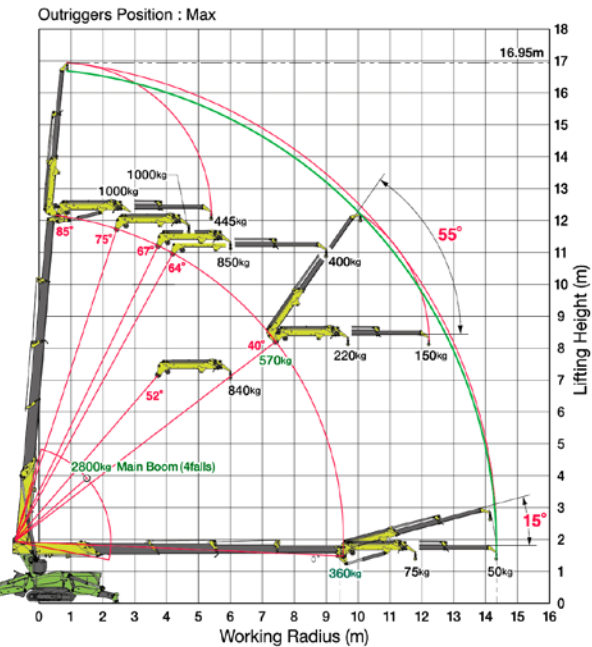
- Radio Remote Control
- 4 Falls Hook Mode
- Automatic & Stepless Multi Outrigger Setting
- Variable Crawler Gauge
- Negative Angle Jib
- Low Ground Pressure

Crane Specifications

Crane capacity	capacity:	2.8 t x 1.8m (1 t x 4.7m jib)
Max working radius	max:	9.4m x 360kg (14.3m x 50g jib)
Max lifting height (on ground)	approx:	12m x 360kg (16.95m x 445kg jib)
Dimensions		3195mm x 780mm x 1945mm
Machine weight		2900kg
Machine weight		2900kg
Outrigger System	Type	Hydraulic cylinder direct acting type
	Max extended width	4546mm x 4537mm x 4315mm
	Extended position	Multi (stepless)
		83.4kpa
Ground Pressure	Type	Lithium Titanate Battery
Battery system	5 hour rate capacity	DC55V - 135Ah
	Input voltage / current	Single phase AC200V/16A, AC100V/14A
	Charging time with AC-200V	80%: 2 hr 20 min / 100% 3 hr 30 min
	Charging time with AC-100V	80%: 5 hr 20 min / 100% 7 hr
	Continuous operation time	Full working day if charged continuous
	Charging during operation	Available
Options		Black or white rubber tracks, winch (4 falls)



Working Range



First & Second Stage

FIRST STAGE EXTENDED 3.7-5.95M BOOM LENGTH							
Working radius m	<2.5	3	3.5	4	4.5	5	5.62
Outrigger Max kg	2980	2390	1990	1710	1490	1340	1160
Mid kg	2980	2360	1960	1680	1380	1140	950
Min kg	2980	2350	1800	1430	1140	950	790

Third Stage

SECOND STAGE EXTENDED 8.14M BOOM LENGTH										
Working radius m	2.7	3	3.5	4	4.5	5	5.5	6	7	7.82
Outrigger Max kg	2270	2120	1680	1440	1260	1110	990	880	730	630
Mid kg	2270	2090	1680	1420	1240	1070	950	800	610	520
Min kg	2270	2080	1680	1420	1240	1070	950	670	510	430

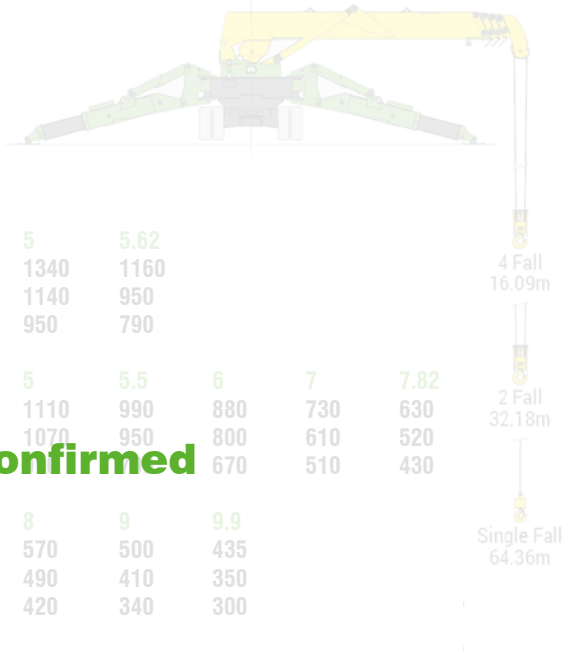
Fourth Stage

THIRD STAGE EXTENDED 10.31M BOOM LENGTH									
Working radius m	4	4.5	5	6	7	8	9	9.9	
Outrigger Max kg	1080	985	880	770	670	570	500	435	
Mid kg	1060	950	860	750	630	490	410	350	
Min kg	1060	950	860	680	530	420	340	300	

Fifth Stage

FOURTH STAGE EXTENDED 12.45M BOOM LENGTH										
Working radius m	<4.5	5	6	7	8	9	10	11	12.16	
Outrigger Max kg	790	660	520	430	380	340	310	280	260	
Mid kg	780	650	500	410	360	320	290	260	250	
Min kg	780	650	500	410	360	320	290	240	210	

Rated Loads to be confirmed



Dimensions

