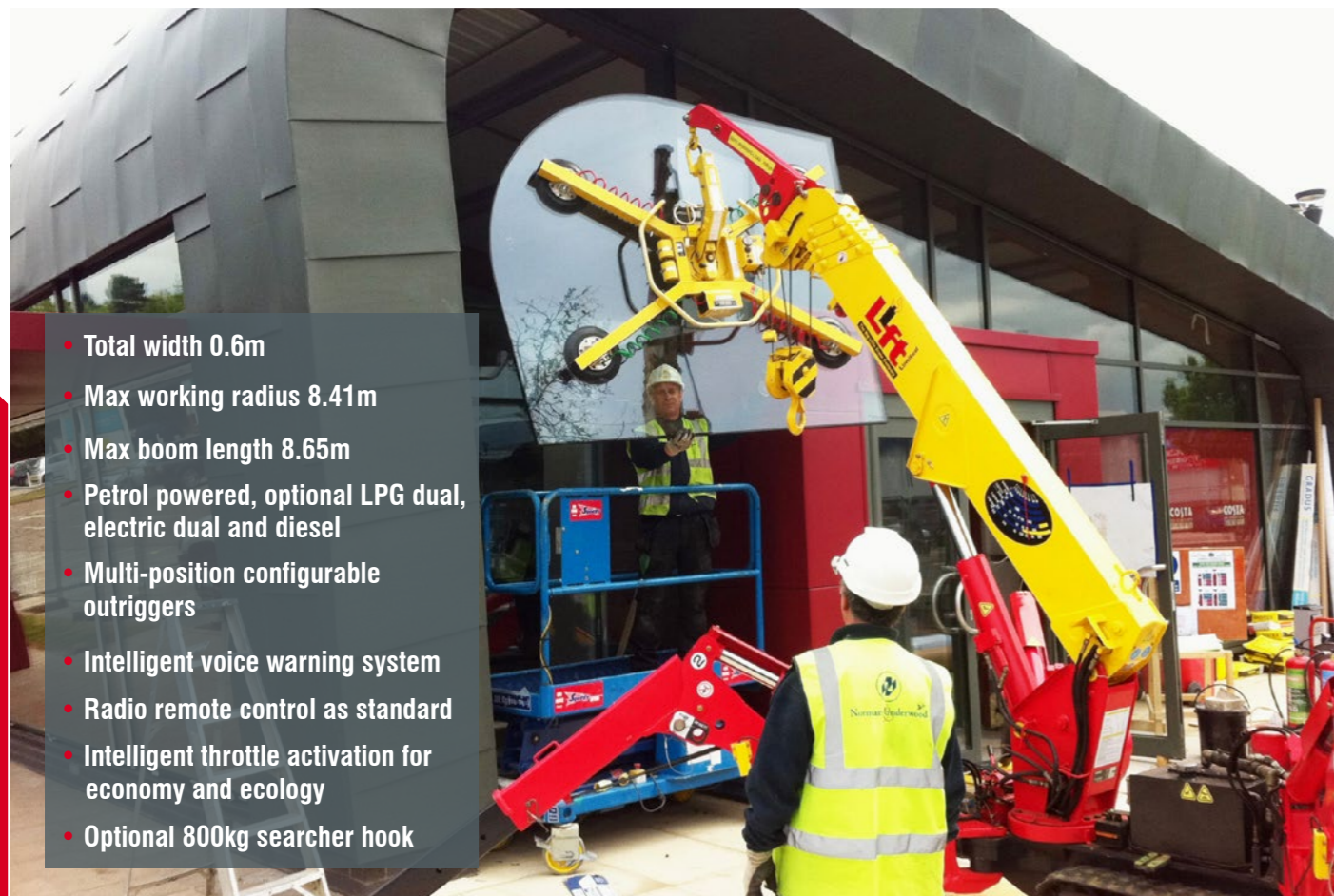
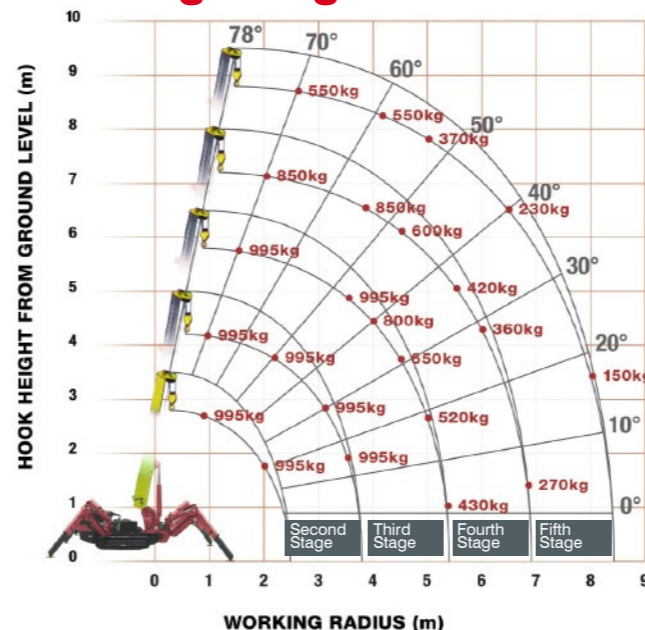


UNIC-095 (0.995t x 3.5m)



- Total width 0.6m
- Max working radius 8.41m
- Max boom length 8.65m
- Petrol powered, optional LPG dual, electric dual and diesel
- Multi-position configurable outriggers
- Intelligent voice warning system
- Radio remote control as standard
- Intelligent throttle activation for economy and ecology
- Optional 800kg searcher hook

Working Range



Optional 700kg Searcher Hook

Stage	Boom Length (m)	Working radius (m)	Outrigger Max-extended (kg)	Outrigger Min-extended (kg)	1.0	1.4	1.5	1.8	2.0	2.5	3.0	3.5	3.835
Second Stage	2.53 - 4.075M	up to 1.0	995	995	995	995	995	995	995	995	995	995	900
		up to 1.4	995	995	995	995	995	995	995	995	995	995	900
Third Stage	4.075 - 5.61M	up to 2.2	995	995	995	995	995	995	995	995	995	995	900
		up to 2.5	995	995	995	995	995	995	995	995	995	995	900
Fourth Stage	5.61 - 7.13M	up to 3.3	850	850	850	850	850	850	850	850	850	850	850
		up to 3.8	850	850	850	850	850	850	850	850	850	850	850
Fifth Stage	7.13 - 8.65M	up to 3.8	550	550	550	550	550	550	550	550	550	550	550
		up to 4.1	550	550	550	550	550	550	550	550	550	550	550

Crane Specifications

Crane capacity	capacity:	0.995t x 3.5m
Max working radius	max:	8.41m
Max lifting height	approx:	8.8m
Rope length	max:	11.7m (4 fall), 23.4m (2 fall), 46.8m (1 fall)
Dimensions	folded:	2690mm
		(2905mm diesel & electrical dual) (l) x 600mm (w) x 1380mm (h)
Weight	unladen:	1850kg (1950kg electric option, 1920kg diesel option, 2090kg diesel and electric dual option)
Point loadings	Due to the many variables involved, point loadings are only available on request	
Hook speed	approx:	10m/min (with 4 layers and 4 falls)
Telescopic system	boom length:	2.53 - 8.65m
	telescoping speed:	6.12m/20 seconds
	boom type:	5 section hydraulically telescoping boom, hexagonal box construction
Derricking angle/speed	approx:	0 - 78°/11 seconds
Stewing angle/speed	approx:	360° (continuous) 1.5min ⁻¹ (rpm)
Traction system	drive:	hydrostatic, step-less forward and reverse
	travel speed:	0 - 2.3km/h
	gradability:	20°
	track ground length:	1050mm
	track ground pressure:	48kPa (0.49kg/cm ²)
	track width:	180mm
Engine	manufacturer:	Mitsubishi (Kubota diesel)
	fuel:	petrol (LPG dual, electric dual and diesel options)
	maximum output:	9.6kW (13PS) / 2500min ⁻¹ (rpm)
	starting method:	electric and recoil start as standard
	tank capacity:	6 litres
Electric motor	power:	3.7kW
	voltage:	400v AC 50/60Hz
Standard equipment	overload warning device, overload warning lamps, computer controlled intelligent voice warning system, radio remote control, intelligent throttle activation	
Optional equipment	1 fall hook block, 2 fall hook block, LPG dual power, mains electric dual power (400v), diesel engine, low marking tracks,	



Outrigger Positions

