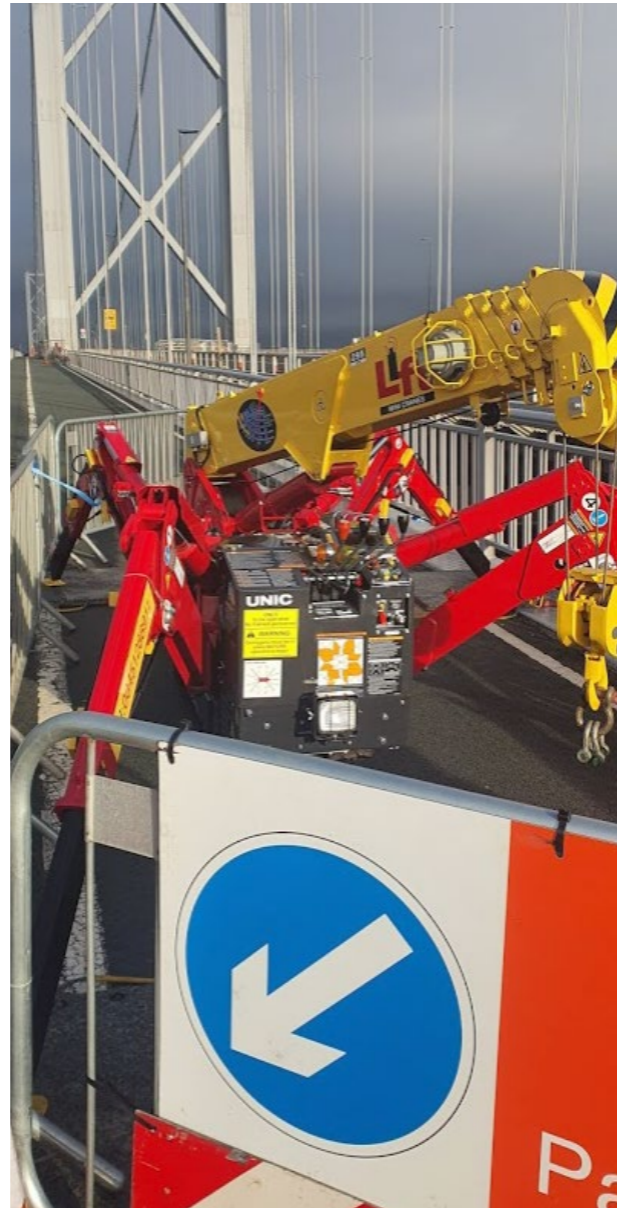


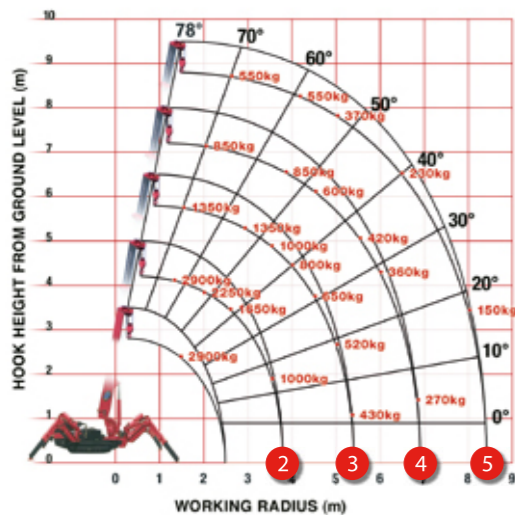
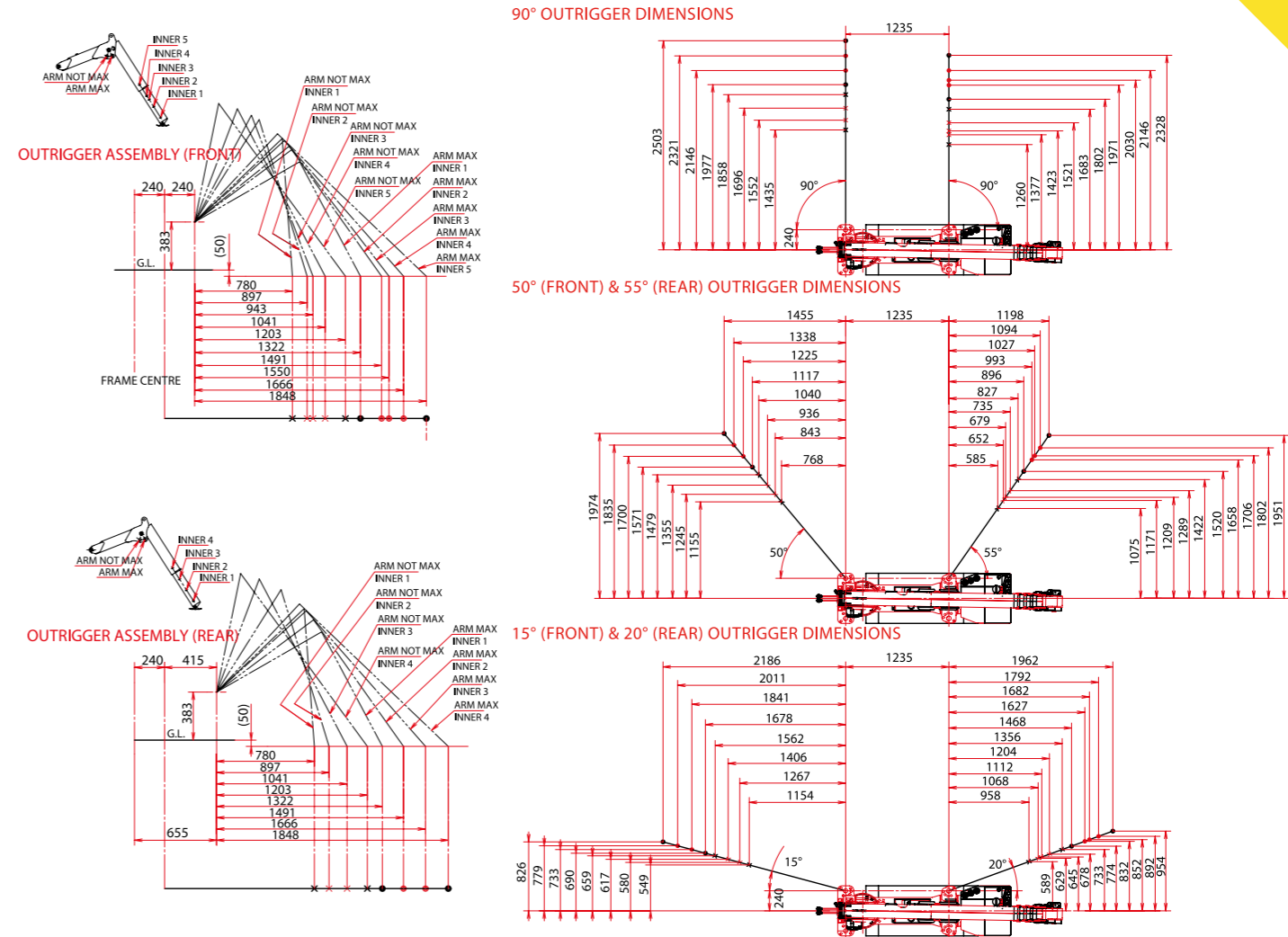
URW-295-3 (2.9t x 1.4m)

SPECIFICATION

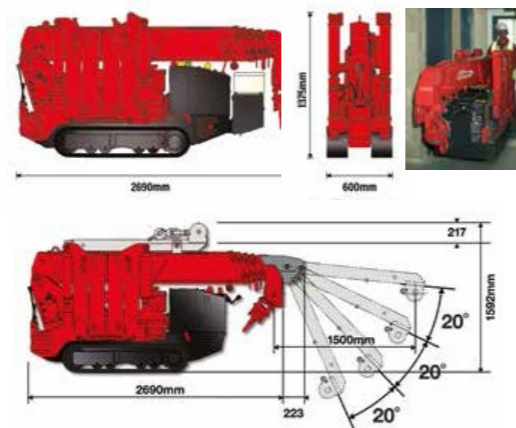
Crane capacity	capacity:	2.9t x 1.4m
Max working radius	max:	8.41m
Max lifting height	approx:	8.8m (9.8m with manual fly jib, 10.47m with fixed hook)
Rope length	max:	14.12 m (4 fall), 29.24 m (2 fall), 59.47 m (1 fall)
295-3 dimensions	folded on tracks:	2690mm (2905mm diesel & electrical dual) (l) x 600mm (w) x 1375mm (h)
295-CBE-3 dimensions	folded on tracks:	2720mm (l) x 690mm (w) x 1525mm (h)
295-WBE-3 dimensions	folded on wheels:	2730mm (l) x 750mm (w) x 1560mm (h)
295-3 weight	unladen on tracks:	1850kg (1950kg with electric option, 1920kg with diesel option, 2090kg with diesel and electric dual option)
295-CBE-3 weight	unladen on tracks:	2350kg (2415kg with fly jib)
295-WBE-3 weight	unladen on wheels:	2425kg (2490kg with fly jib)
Point loadings	Due to the many variables involved, point loadings are only available on request	
Hook speed	approx:	10m/min (with 4 layers and 4 falls)
Telescopic system	boom length: telescoping speed: boom type:	2.53 - 8.65m 6.12m/20 seconds 5 section, hydraulically telescoping boom, hexagonal box construction
Derricking angle/speed	approx:	0 - 78°/11 seconds
Slewing angle/speed	approx:	360° (continuous) 1.5 min rpm
Traction system	drive: travel speed: gradeability: track ground length: track ground pressure: track width:	hydrostatic, stepless forward and reverse 0 - 2.3 km/h ± 20° (vertical) 10° (traverse) 1050mm 48kPa (0.49 kg/cm²) 180mm
Engine	manufacturer: drive: maximum output: starting method: tank capacity:	Mitsubishi (Kubota diesel) petrol with LPG and electric options, diesel with electric option 9.6kW (13PS) / 2000min rpm electric and recoil start as standard 6 litres petrol, 9 litres diesel
295-3 Electric motor	power: voltage:	3.7kW 400v AC 50/60Hz
ECO-295-3 Power Source (on wheels and tracks)	power: voltage:	3.1kW (AC motor) 48v DC rechargeable battery
Standard equipment	computer controlled moment limiter (safe load indicator), radio remote control, over-winding alarm, computer controlled intelligent voice. Warning system, multi-function operation by radio remote control, intelligent throttle activation, automatic hook stow, overload warning lamps. Height limitation, variable height limitation, slew limitation, variable slew limitation, variable outriggers	
Optional equipment	1 fall hook block, 2 fall hook block, LPG dual power, mains electric dual power (400v), diesel engine, low marking tracks, searcher hook 700kg, manual fly jib 700kg with single part line, radio remote control with feedback display, data logging	



OUTRIGGER DIMENSIONS



URW-295-3 DIMENSIONS



- Standard radio remote control
- Optional radio remote control with digital feedback
- Full colour high resolution safe load indicator

