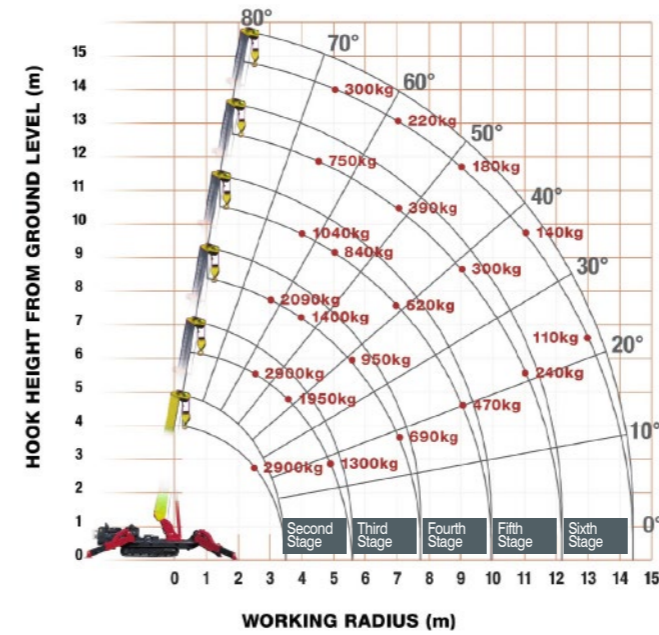


# UNIC-376 (2.9t x 2.5m)



- Total width 1.3m
- Max working radius 14.45m
- Max boom length 14.61m
- Diesel powered and optional mains electric
- Zero length increase with electric option
- Operator control of outrigger extension
- Radio remote control as standard
- Working area limitation
- Slew limitation (optional)
- Intelligent throttle activation for economy and ecology

## Working Range



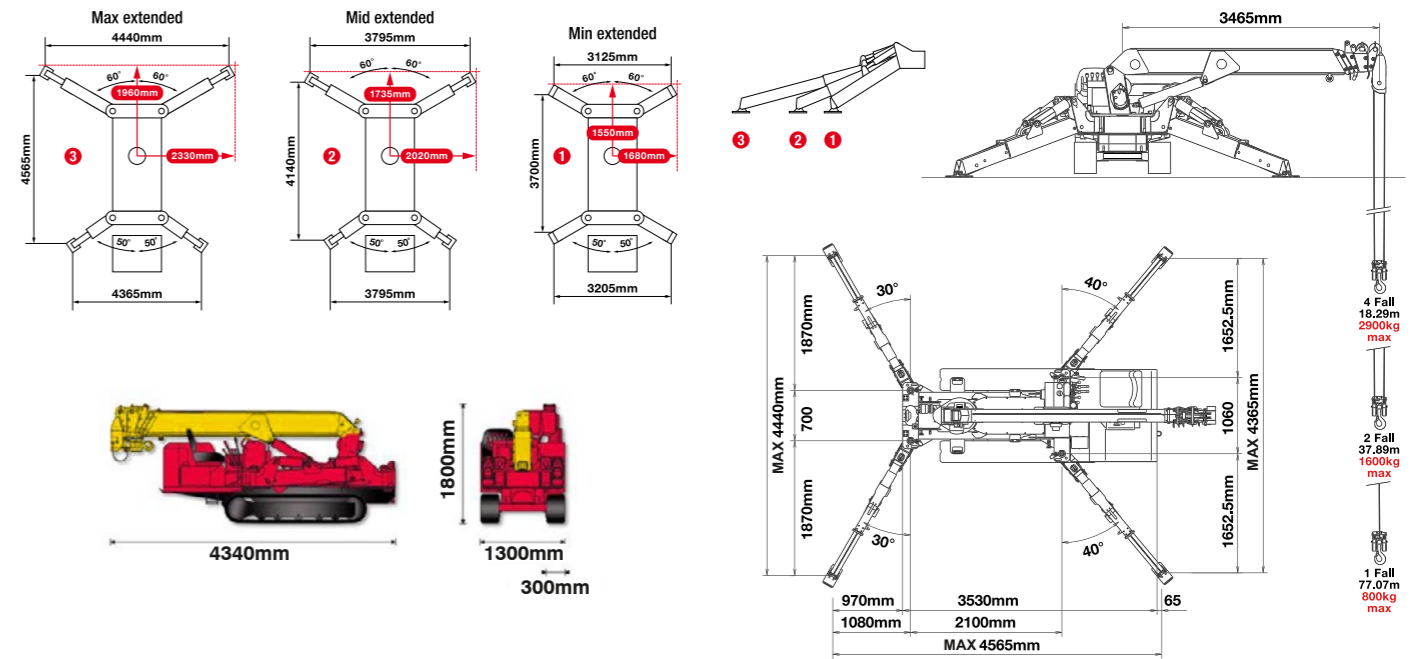
Stage	Boom Length (m)	Working radius (m)	Outrigger	Max-extended (kg)	Mid-extended (kg)	Min-extended (kg)	3.0	3.5	4.0	4.5	5.0	5.69			
Second Stage	EXTENDED 3.63 - 5.85	up to 2.0	m	2,900	2,900	2,900	2,350	1,950	1,670	1,450	1,300	1,070			
				2,900	2,900	2,320	1,920	1,570	1,250	990	770				
				2,900	2,900	2,170	1,500	1,120	900	720	470				
Third Stage	EXTENDED 5.85 - 8.04	up to 2.7	m	2,240	2,090	1,650	1,650	1,400	1,220	1,070	950	840	690	590	
				2,240	2,060	1,650	1,390	1,170	1,000	820	640	450	370		
				2,240	2,060	1,570	1,220	1,020	830	650	510	300	190		
Fourth Stage	EXTENDED 8.04 - 10.23	up to 4.0	m	1,040	930	840	840	730	620	520	470	380			
				1,030	920	830	670	500	380	280	200				
				1,030	820	640	470	310	220	130	90				
Fifth Stage	EXTENDED 10.23 - 12.42	up to 4.5	m	750	620	480	480	390	340	300	270	240	230		
				750	620	470	390	320	270	220	170	130			
				750	620	400	250	180	130	90	60	10			
Sixth Stage	EXTENDED 12.42 - 14.61	up to 4.9	m	300	270	250	250	220	200	180	160	140	130	110	100
				300	270	250	220	200	180	160	120	90	60	40	
				300	270	250	220	200	180	160	120	90	60	40	

## Crane Specifications

<b>Crane capacity</b>	capacity:	2.9t x 2.5m
<b>Max working radius</b>	max:	14.45m
<b>Max lifting height</b>	approx:	14.9m
<b>Rope length</b>	max:	17.5m (4 fall), 35m (2 fall), 70m (1 fall)
<b>Dimensions</b>	folded:	4340mm (l) x 1300mm (w) x 1800mm (h)
<b>Weight</b>	unladen:	3850kg (4000kg with electric option)
<b>Point loadings</b>	Due to the many variables involved, point loadings are only available on request	
<b>Hook speed</b>	approx:	17m/min (with 4 layers and 4 falls)
<b>Telescopic system</b>	boom length:	3.63 - 14.61m
	telescoping speed:	10.98m/23 seconds
	boom type:	6 section hydraulically telescoping boom, hexagonal box construction
	approx:	0 - 80°/10 seconds
	approx:	360° (continuous) 2.5min-1 (rpm)
	drive:	hydrostatic 2-speed
	travel speed:	0-3km/h
	gradability:	23°
	track ground length:	1750mm
	track ground pressure:	36kPa (0.37kg/cm <sup>2</sup> )
	track width:	300mm
<b>Engine manufacturer</b>	Mitsubishi	
	fuel:	diesel (electric dual power option)
	maximum output:	18kW (24.5PS) / 2100min-1 (rpm)
	starting method:	electric
	tank capacity:	40 litres
<b>Electric motor</b>	power:	7.5kW
	voltage:	400v AC 50/60Hz
<b>Standard equipment</b>	computer controlled moment limiter (safe load indicator), overload warning lamps, intelligent voice warning system, radio remote control, intelligent throttle activation	
<b>Optional equipment</b>	2 fall hook block, 1 fall hook block, mains electric dual power (400v), low marking tracks, slew limitation	



## Outrigger Positions



# LIFT UNIC-376 FLY EXTENSION



This 700kg capacity mini crane attachment is a searcher hook and fly jib combined which can provide extra lifting length for reaching over balustrades and rooftops.

Using the searcher hook increases the maximum working height of the UNIC-376 from 14.9m to 17.33m

- Capacity: 700kg maximum
- Length: 2017mm
- Weight: 50kg
- Tilt angles: 0°, 20°, 40°, 60°



## Working Range

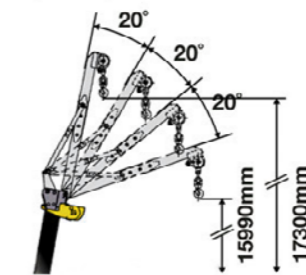
SEARCHER HOOK - 1 <sup>st</sup> to 4 <sup>th</sup> boom sections			
Working Radius (m)	Rated Load (kg)		
	Outriggers Max Extended	Outriggers Half Extended	Outriggers Min Extended
4.5	700	700	500
5.0	500	500	500
6.0	400	400	500
7.0	350	300	500
8.0	300	200	PROHIBITED AREA OF CRANE OPERATION
9.0	250	100	
10.0	150		
11.0	100		
12.1			

SEARCHER HOOK - 5 <sup>th</sup> boom section			
Working Radius (m)	Rated Load (kg)		
	Outriggers Max Extended	Outriggers Half Extended	Outriggers Min Extended
4.5	280	280	280
5.0	280	280	280
6.0	280	280	280
7.0	250	250	250
8.0	220	220	PROHIBITED AREA OF CRANE OPERATION
9.0	190	190	
10.0	170	150	
11.0	150		
12.0	130		
13.0			
14.2			

FLY JIB - 5 <sup>th</sup> boom section				
Boom Angle	Rated Load (kg) at Tilt Angle (°)			
	0°	20°	40°	60°
80°	450	450	450	450
75°	450	450	400	400
70°	300	300	200	200
65°	300	300	200	200
60°	150	150	PROHIBITED AREA OF CRANE OPERATION	PROHIBITED AREA OF CRANE OPERATION
55°				
50°				
40°				
30°				
20°				
10°				
0°				

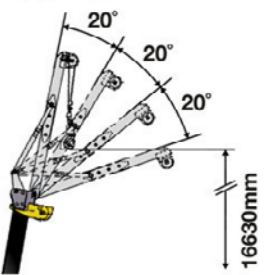
## SEARCHER HOOK

Maximum Load 150kg - 700kg (radius rated)



## FLY JIB

Maximum Load 150kg - 700kg (angle rated)



SEARCHER HOOK - 6 <sup>th</sup> boom section			
Working Radius (m)	Rated Load (kg)		
	Outriggers Max Extended	Outriggers Half Extended	Outriggers Min Extended
5.0	150	150	150
5.5	150	150	150
6.0	130	140	130
7.0	100	100	100
8.0	PROHIBITED AREA OF CRANE OPERATION	PROHIBITED AREA OF CRANE OPERATION	PROHIBITED AREA OF CRANE OPERATION
9.0			
10.0			
11.0			
12.0			
13.0			
14.0			
15.0			
16.4			

FLY JIB - 6 <sup>th</sup> boom section				
Boom Angle	Rated Load (kg) at Tilt Angle (°)			
	0°	20°	40°	60°
80°	150	150	150	150
75°	150	150	150	150
70°	100	100	100	100
65°	PROHIBITED AREA OF CRANE OPERATION	PROHIBITED AREA OF CRANE OPERATION	PROHIBITED AREA OF CRANE OPERATION	PROHIBITED AREA OF CRANE OPERATION
60°				
55°				
50°				
40°				
30°				
20°				
10°				
0°				