

# LIFT-376 (2.9t x 2.5m)

The LIFT-376 features a six section hydraulic boom to allow it a maximum working radius of 14.45m. This mid-capacity machine can be controlled either from the onboard operator's seat or from a distance using remote control.

## LIFT-376

- Capacity 2.9t x 2.5m
- Total width 1.3m
- Max working radius 14.45m
- Max boom length 14.61m
- Diesel powered and optional mains electric
- Zero length increase with electric option
- Operator control of outrigger extension
- Intelligent voice warning system
- Radio remote control as standard
- Working area limitation
- Slew limitation (optional)
- Intelligent throttle activation for economy and ecology

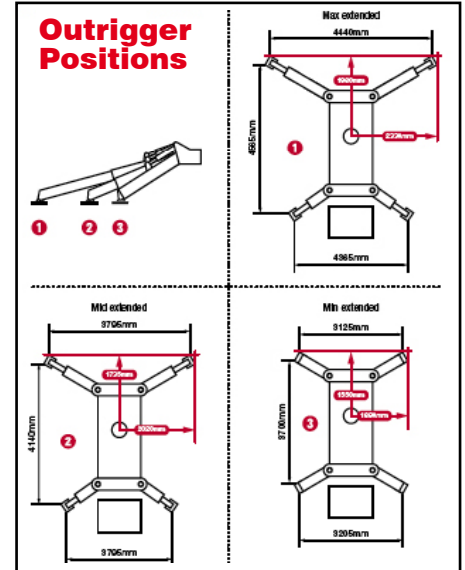
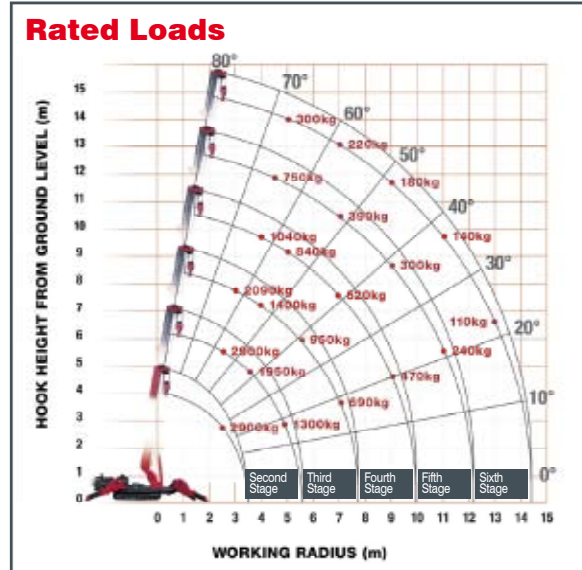


Call us on:  
0116 283 4749  
or mobile:  
0788 525 0969



## Crane Specifications

<b>Crane capacity</b>	capacity:	2.9t x 2.5m
<b>Max working radius</b>	max:	14.45m
<b>Max lifting height</b>	approx:	14.9m
<b>Rope length</b>	max:	17.5m (4 fall), 35m (2 fall), 70m (1 fall)
<b>Dimensions</b>	folded:	4340mm (l) x 1300mm (w) x 1800mm (h)
<b>Weight</b>	unladen:	3850kg (4000kg with electric option)
<b>Point loadings</b>	Due to the many variables involved, point loadings are only available on request	
<b>Hook speed</b>	approx:	17m/min (with 4 layers and 4 falls)
<b>Telescopic system</b>	boom length:	3.63 - 14.61m
	telescoping speed:	10.98m/23 seconds
	boom type:	6 section hydraulically telescoping boom, hexagonal box construction
<b>Derricking angle/speed</b>	approx:	0 - 80°/10 seconds
<b>Slewing angle/speed</b>	approx:	360° (continuous) 2.5min-1 (rpm)
<b>Traction system</b>	drive:	hydrostatic 2-speed
	travel speed:	0-3km/h
	gradability:	23°
	track ground length:	1750mm
	track ground pressure:	36kPa (0.37kg/cm2)
	track width:	300mm
<b>Engine manufacturer:</b>	Mitsubishi	
	fuel:	diesel (electric dual power option)
	maximum output:	18kW (24.5PS) / 2100min-1 (rpm)
	starting method:	electric
	tank capacity:	40 litres
<b>Electric motor</b>	power:	7.5kW
	voltage:	400v AC 50/60Hz
<b>Standard equipment</b>	computer controlled moment limiter (safe load indicator), overload warning lamps, intelligent voice warning system, radio remote control, intelligent throttle activation	
<b>Optional equipment</b>	2 fall hook block, 1 fall hook block, mains electric dual power (400v), low marking tracks, slew limitation	



### Second Stage

#### SECOND STAGE EXTENDED 3.63 - 5.85M BOOM LENGTH

Working radius	m	up to 2.0	2.5	3.0	3.5	4.0	4.5	5.0	5.69	
Outrigger	Max-extended	kg	2,900	2,900	2,350	1,950	1,670	1,450	1,300	1,070
	Mid-extended	kg	2,900	2,900	2,320	1,920	1,570	1,250	990	770
	Min-extended	kg	2,900	2,900	2,170	1,500	1,120	900	720	470

### Third Stage

#### THIRD STAGE EXTENDED 5.85 - 8.04M BOOM LENGTH

Working radius	m	up to 2.7	3.0	3.5	4.0	4.5	5.0	5.5	6.0	7.0	7.88	
Outrigger	Max-extended	kg	2,240	2,090	1,650	1,400	1,220	1,070	950	840	690	590
	Mid-extended	kg	2,240	2,060	1,650	1,390	1,170	1,000	820	640	450	370
	Min-extended	kg	2,240	2,060	1,570	1,220	1,020	830	650	510	300	190

### Fourth Stage

#### FOURTH STAGE EXTENDED 8.04 - 10.23M BOOM LENGTH

Working radius	m	up to 4.0	4.5	5.0	6.0	7.0	8.0	9.0	9.0 1	0.07
Outrigger	Max-extended	kg	1,040	930	840	730	620	520	470	380
	Mid-extended	kg	1,030	920	830	670	500	380	280	200
	Min-extended	kg	1,030	820	640	470	310	220	130	90

### Fifth Stage

#### FIFTH STAGE EXTENDED 10.23 - 12.42M BOOM LENGTH

Working radius	m	up to 4.5	5.0	6.0	7.0	8.0	9.0	10.0	11.0 1	2.26	
Outrigger	Max-extended	kg	750	620	480	390	340	300	270	240	230
	Mid-extended	kg	750	620	470	390	320	270	220	170	130
	Min-extended	kg	750	620	400	250	180	130	90	60	10

### Sixth Stage

#### SIXTH STAGE EXTENDED 12.42 - 14.61M BOOM LENGTH

Working radius	m	up to 4.9	5.5	6.0	7.0	8.0	9.0	10.0	11.0	12.0	13.0	14.45	
Outrigger	Max-extended	kg	300	270	250	220	200	180	160	140	130	110	100
	Mid-extended	kg	300	270	250	220	200	180	160	120	90	60	40
	Min-extended	kg	300	270	250	220	170	110	80	50	30	20	10