

LIFT-706 (6.0t x 3.0m)

LIFT-706

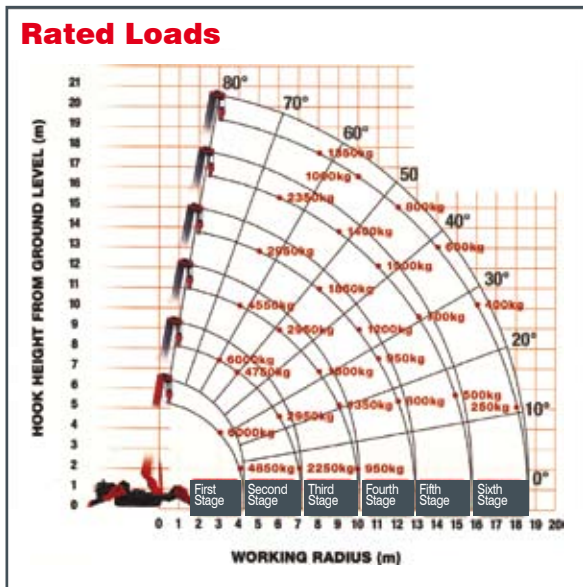
- Capacity 6.0t x 3.0m
- Total width 1.6m
- Max working radius 18.6m
- Max boom length 19.2m
- Diesel powered and optional mains electric
- Zero length increase with electric option
- Radio remote control as standard
- Working area limitation
- Stowable fly (extension) jib (optional)
- Searcher hook (optional)
- Slew limitation (optional)
- Intelligent throttle activation for economy and ecology

With a 6 tonne capacity at 3m and a hook height of 19.5m, the LIFT-706 is the highest capacity crane in the LIFT range. The new machine is the behemoth of the mini crane world and yet at 1600mm wide is still narrow enough to gain access through a standard double doorway. For added lifting flexibility, the 706 also features an optional 3.1m long stowable fly jib, together with an optional searcher hook.

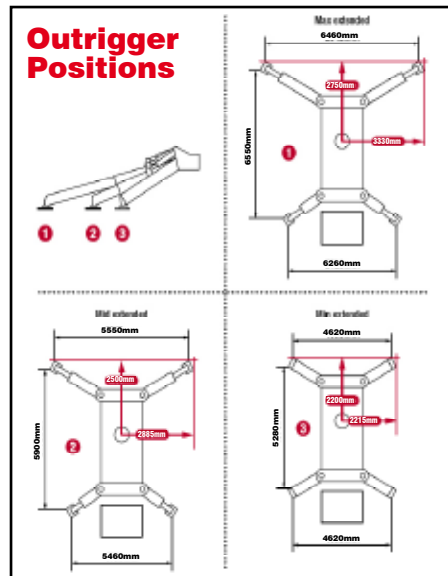
Crane Specifications

Crane capacity	capacity:	6.0t x 3.0m
Max working radius	max:	18.6m
Max lifting height	approx:	19.5m (22.7m with extension jib)
Rope length	max:	27.75m (4 fall), 55.5m (2 fall), 111m (1 fall)
Dimensions	folded:	5610mm (l) x 1600mm (w) x 2185mm (h)
Weight	unladen:	7920kg (8070kg with electric option)
Point loadings	Due to the many variables involved, point loadings are only available on request	
Hook speed	approx:	11m/min (with 4 layers and 4 falls)
Telescopic system	boom length:	4.80 - 19.20m
	telescoping speed:	14.4m/52 seconds
	boom type:	6 section hydraulically telescoping boom, hexagonal box construction
Derricking angle/speed	approx:	0 - 80°/16.0 seconds
Slewing angle/speed	approx:	360° (continuous) 2.5min-1 (rpm)
Traction system	drive:	hydrostatic 2-speed
	travel speed:	0 - 3km/h
	gradability:	23°
	track ground length:	2240mm
	track ground pressure:	87.2kPa (0.89kg/cm ²)
	track width:	400mm
Engine	manufacturer:	Mitsubishi
	fuel:	diesel (electric dual power option)
	maximum output:	23.5kW (32.0PS) / 2500min-1 (rpm)
	starting method:	electric
	tank capacity:	74 litres
Electric motor	power:	7.5kW
	voltage:	400v AC 50/60Hz
Standard equipment	Computer controlled moment limiter (safe load indicator), overload warning lamps, intelligent voice warning system, radio remote control, intelligent throttle activation	
Optional equipment	Stowable fly (extension) jib, searcher hook, 2 fall hook block, 1 fall hook block, 1 fall hook block, mains electric dual power (400v), low marking tracks, slew limitation	

Rated Loads



Outrigger Positions



Searcher Hook



Call us on:
0116 283 4749
or mobile:
0788 525 0969

