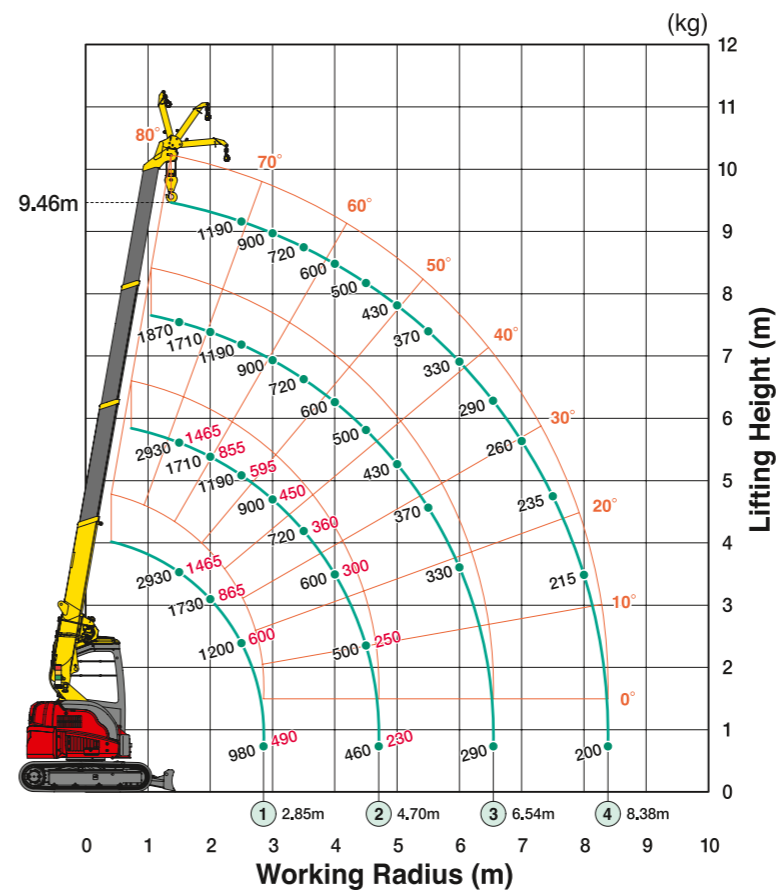


CC423S-1 (2.93t x 1.5m)



Working Range



Pick & Carry Duties

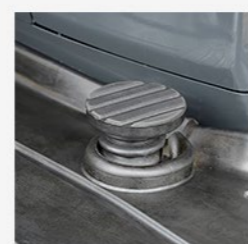
3.18m boom		5.03m boom	
Working radius (m)	Total rated load (kg)	Working radius (m)	Total rated load (kg)
1.5	1465	1.5	1465
2.0	865	2.0	865
2.5	600	2.5	595
2.85	490	2.85	490
		3.0	450
		3.5	380
		4.0	300
		4.5	250
		4.7	230

Total rated load

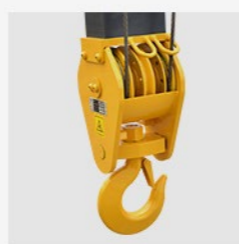
3.18m boom		5.03m boom		6.87m boom		8.71m boom	
Working radius (m)	Total rated load (kg)	Working radius (m)	Total rated load (kg)	Working radius (m)	Total rated load (kg)	Working radius (m)	Total rated load (kg)
1.5	2930	1.5	2930	1.5	1870	1.5	1190
2.0	1730	2.0	1710	2.0	1710	2.0	1190
2.5	1200	2.5	1190	2.5	1190	2.5	1190
2.85	980	2.85	980	2.85	980	2.85	980
		3.0	900	3.0	900	3.0	900
		3.5	720	3.5	720	3.5	720
		4.0	600	4.0	600	4.0	600
		4.5	500	4.5	500	4.5	500
		4.7	460	4.7	460	4.7	460
				5.0	430	5.0	430
				5.5	370	5.5	370
				6.0	330	6.0	330
				6.5	290	6.5	290
						7.0	260
						7.5	235
						8.0	215
						8.38	200

Crane Specifications

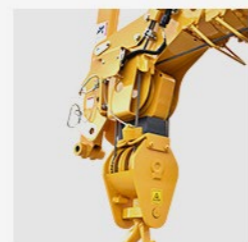
Model	CC423S-1
Crane Capacity	2.93t x 1.5m
Max. Working Radius	8.38m x 0.20t
Max. Lifting Height	9.46m
Max. Reach Below Ground	-15.5m (4 falls)
Pick & Carry Capacity	1,465kg
Travel Speed	0-4.6km/h
Travel Ground Pressure	43.5kpa [0.44kgf/cm ²]
Engine	YANMAR 3TNV88F-EPMBA / Diesel
Engine Rated Output	17.5kw/2,400rpm
Dimensions	4,020mm (L) x 1,740mm (W) x 2,495mm (H)
Tail swing	980mm
Machine Weight	4,400kg (Rubber Pads : +90kg)



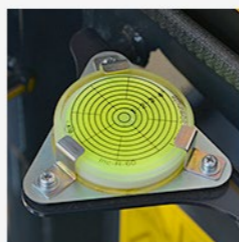
Travel 2 Speed Functions



4 fall / 2 fall Hook Block



Automatic Hook Storage System



Level



Programmable Moment Limiter / Diagnostic Display



Blade

Dimensions

