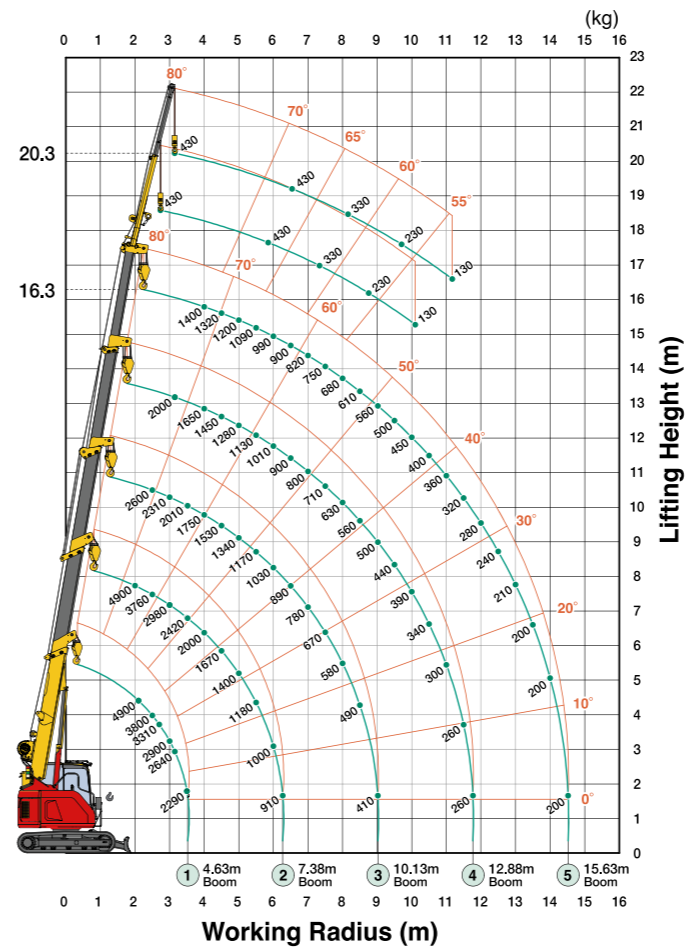


# LC785 (4.9t x 2.1m)



## Working Range



### Pick & Carry Duties

4.63m boom		7.38m boom		10.13m boom	
Working radius (m)	Total rated load(kg)	Working radius (m)	Total rated load(kg)	Working radius (m)	Total rated load(kg)
2	2000	2	2000	2	1400
2.5	2000	2.5	2000	2.5	1400
3	1670	3	1700	3	1360
3.5	1330	3.5	1380	3.5	1170
		4	1140	4	1020
		4.5	960	4.5	890
		5	810	5	770
		5.5	690	5.5	680
		6	590	6	590
		6.27	540	6.27	550
				6.5	510
				7	440
				7.5	380
				8	320
				8.5	270
				9	230
				9.02	230

### Total rated load

4.63m boom		7.38m boom		10.13m boom		12.88m boom		15.63m boom	
Working radius (m)	Total rated load (kg)	Working radius (m)	Total rated load (kg)	Working radius (m)	Total rated load (kg)	Working radius (m)	Total rated load (kg)	Working radius (m)	Total rated load (kg)
2	4900	2	4900	2	2600	2	2000	2	N/A
2.5	3800	2.5	3760	2.5	2600	2.5	2000	2.5	1400
3	2900	3	2980	3	2310	3	2000	3	1400
3.5	2290	3.5	2420	3.5	2010	3.5	1890	3.5	1400
		4	2000	4	1750	4	1650	4	1400
		4.5	1670	4.5	1530	4.5	1450	4.5	1320
		5	1400	5	1340	5	1280	5	1200
		6	1000	6	1030	6	1010	6	990
				7	780	7	800	7	820
				8	580	8	630	8	680
				9	500	9	500	9	560
				10	390	10	390	10	450
				11	300	11	300	11	360
								12	280
								13	210
								14	200
								14.52	200

## Crane Specifications

<b>Max. working radius</b>	14.52m
<b>Max. lifting height</b>	16.35m
<b>Hook speed</b>	Two speed 27 / 39m / min. (4 falls, 4th layer)
<b>Single line speed</b>	Two speed 108 / 156m / min. (4th layer)
<b>Hoist rope</b>	IWRC 6 x Fi (29) 10mm x 115m
<b>Telescopic system</b>	Boom length 4.63m - 15.63m Telescoping speed 11m / 24.5 sec Boom type Fully automatic 5 section pentagonal telescopic boom
<b>Boom hoist system</b>	Hoist angle / speed -2° to 80° (12.5 sec.)
<b>Slew system</b>	Slew angle / speed 360° continuous / 2.4 rpm
<b>Drive</b>	Both sides independent steering control, hydraulic piston motor with in-built automatic brake, planet reduction gears, sprocket crawler.
<b>Traction speed</b>	Travel speed – low 0 – 2.5 km/h Travel speed – high 0 – 3.8 km/h Gradability 20° Crawler length x width 1.870mm x 450mm Ground pressure 46.8 kpa / cm² (0.48 kg / cm²)
<b>Engine</b>	Model Komatsu S4D95LE-3-A Type 4 cylinder diesel, water cooled, direct injection Rated output 40.5 Kw (55PS) / 1850rpm Fuel / Fuel tank capacity Diesel / 141 L
<b>Dimensions</b>	Length x Width x Height 5005mm x 2350mm x 2685mm Weight 9700kg
<b>Standard equipment</b>	Safe load indicator, steel tracks, 4-fall / 2-fall hook block, working light, hour-meter and inclination alarm.
<b>Optional equipment</b>	Single fall hook, rubber pads (400kg), fly-jib.



## Dimensions

