

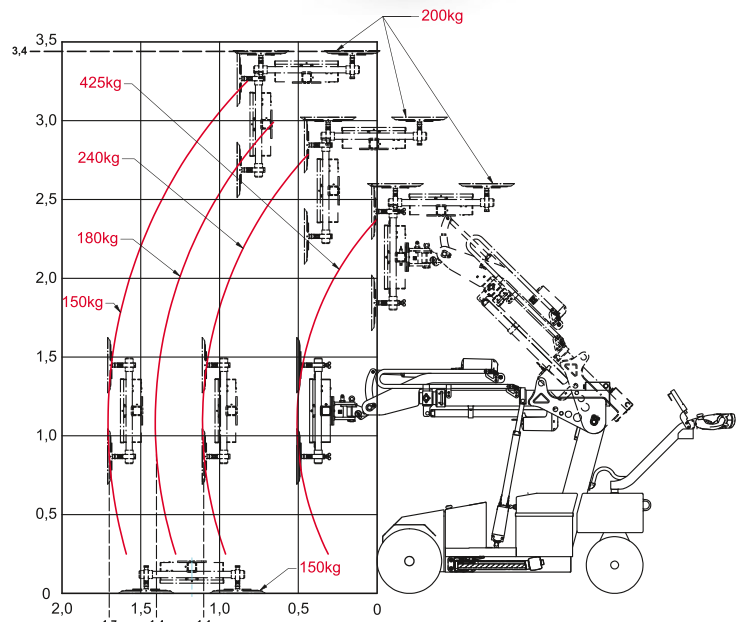
# GLASSWORKER GW 425

- Lifting capacity max. 425kg
- Lifting height vertical until 3m
- Lifting height overhead until 3.40m
- Lifting capacity fully extended 150kg
- Operating time min. 14 hours
- Individual arrangement of the suction cups
- Self monitoring system
- 24 V automotive socket
- Pick and carry using load hook

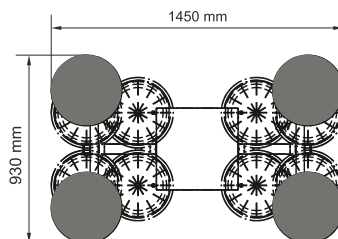


## SPECIFICATION

Lifting capacity	425 kg
Weight	680 kg
Total height	1360 mm
Total width	790 mm
Total length	2000 mm
Lifting capacity fully extended	150 kg
Lifting height vertical	until 3,0 m
Lifting height overhead	until 3,4 m
Tilting of the suction disc	109° forward / 84° backwards
Side offset	50 mm in both directions
Charging Voltage	110/230 Volt
Batteries	24 V / 2x 90 Ah
Front wheel drive	1200 Watt
Vacuum cups	4x Ø 350 mm
Vacuum system	2-circuit-system
Options	load hook, remote control, arm-extension for suction system, twin tires, non marking tires for wear prevention



Suction attachment configuration



Transport position

