

LIFT E ECO095 (0.995t x 3.5m)

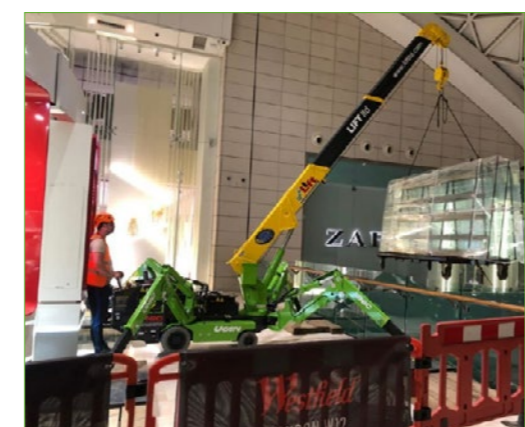


- Battery powered
- Total width 0.75m
- Max working radius 8.41m
- Multi-position configurable outriggers
- Operator control of outrigger extension
- Intelligent voice warning system
- Low-marking wheels

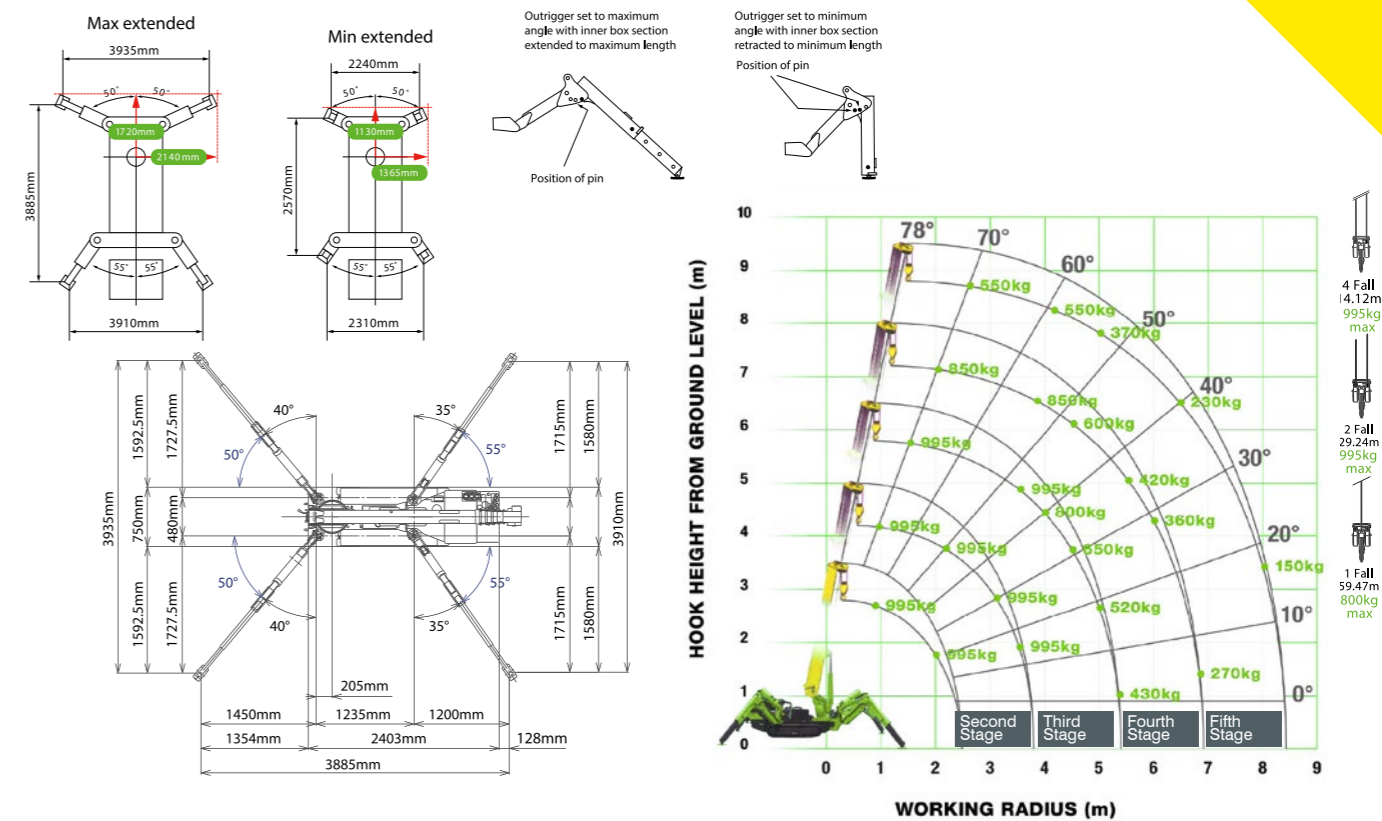


Crane capacity	Eco-095:	0.995t x 3.5m
Max working radius	max:	8.41m
Max lifting height	max:	8.9m
Rope length		14.12m (4 fall), 29.24m (2 fall), 59.47m (1 fall)
Dimensions	folded:	2730mm (l) x 750mm (w) x 1560mm (h)
Weight	unladen:	2425kg (2490kg with jib)
Point loadings		Due to the many variables involved, point loadings are only available on request
Hook speed	approx:	4.7m/min (with 4 layers and 4 falls)
Telescopic system	boom length: telescoping speed: boom type:	2.53 - 8.65m 6.12m/40 seconds 5 section hydraulically telescoping boom, hexagonal box construction
Derricking angle/speed	approx:	0 - 78°/21 seconds
Slewing angle/speed	approx:	360° (continuous) 1.5 rpm
Travelling system	drive: travel speed: steering angle: min. turning radius: gradeability:	hydraulic motor wheeled drive 1.5-1.8km/h 50° left and 50° right outer 1990mm x inner 510mm ± 20° (vertical) 10° (traverse)
Size of tyres	front: rear:	4.00-8 (wheel RIM 3.00 D-8) 3.50-5 (wheel RIM 3.00 SP-5)
Power source	power: voltage:	3.1kW (AC motor) 48v DC rechargeable battery
Battery charger	charger:	200/240v single phase (15A)
Standard equipment Eco-095		radio remote control, overwinding alarm, computer controlled intelligent voice warning system, multi-function operation by radio remote control, intelligent throttle activation, automatic hook stow, load indication, turn-over protection system with stability warning lamps and alarm
Optional equipment		1 fall hook block, 2 fall hook block, 700kg capacity searcher hook, 700kg fly jib with single part line

Introducing the latest in mini crane engineering, the UNIC battery powered Eco-095 model provides fume-free lifting for sensitive environments. Ideal for food processing plants, listed buildings, shopping centres, airports and clean environments, these unique mini cranes are powered by a rechargeable 48v battery yet retain all the lifting power of our standard models. Innovative features include low-marking wheels which enable the cranes to work on light-coloured or polished surfaces.



Outrigger Positions & Working Range



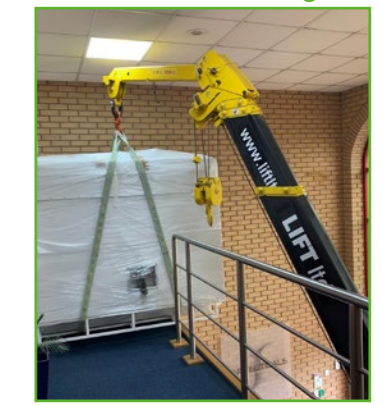
SECOND STAGE EXTENDED 2.53 - 4.075M BOOM LENGTH		2.53	4.075	4.5	5.0	5.5	6.0	6.5	7.0	7.5	8.0	8.41
Working radius	m	up to 1.0	1.4	1.5	1.8	2.0	2.5	3.0	3.5	3.835		
Outrigger	kg	995	995	995	995	995	995	995	995	995	995	900
	kg	995	995	995	995	995	650	490	350	250		

THIRD STAGE EXTENDED 4.075 - 5.61M BOOM LENGTH		4.075	4.5	5.0	5.5	6.0	6.5	7.0	7.5	8.0	8.41
Working radius	m	up to 2.2	2.5	2.9	3.0	3.5	4.0	4.5	5.0	5.37	
Outrigger	kg	995	995	995	995	995	800	650	520	430	
	kg	800	650	530	500	380	280	220	160	120	

FOURTH STAGE EXTENDED 5.61 - 7.13M BOOM LENGTH		5.61	6.0	6.5	7.0	7.5	8.0	8.41
Working radius	m	up to 3.3	3.8	4.0	4.5	5.0	5.5	6.0
Outrigger	kg	850	850	750	600	500	420	360
	kg	420	340	300	250	190	140	100

FIFTH STAGE EXTENDED 7.13 - 8.65M BOOM LENGTH		7.13	7.5	8.0	8.41
Working radius	m	up to 3.8	4.1	4.5	5.0
Outrigger	kg	550	550	450	370
	kg	350	290	250	200

Searcher hook 700kg



Dimensions

