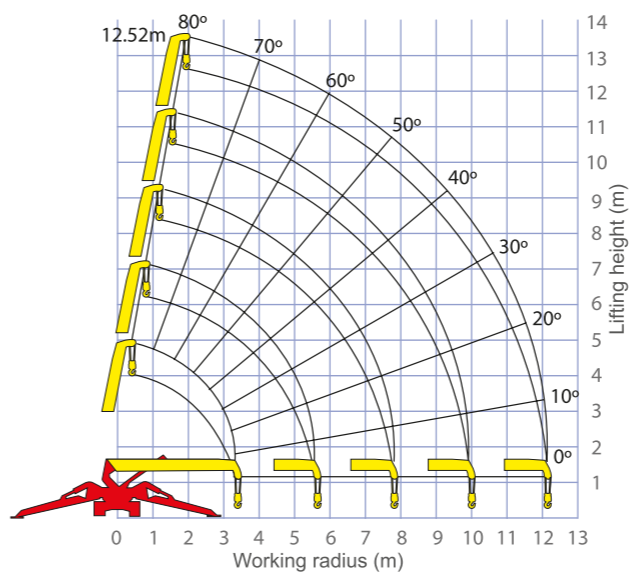


LIFT MAEDAMC305 (2.9t x 2.5m)



- Robust engineered body for strong, reliable performance
- 12.5m boom with optional 500kg searcher hook
- Only 1280mm wide
- Programmable moment limiter
- Tilt sensor / Alarm
- Radio Remote Control
- 64m of rope on a single fall
- Variable Hi/Low speed

Working Range



Stage	Boom Length (m)	Working radius (m)	Outrigger Max (kg)	Outrigger Mid (kg)	Outrigger Min (kg)
First Stage	FIRST STAGE EXTENDED 3.7-5.95M BOOM LENGTH	<2.5	2980	2980	2980
		3	2390	2360	2350
		3.5	1990	1960	1800
		4	1710	1680	1430
		4.5	1490	1380	1140
		5	1340	1140	950
		5.62	1160	950	790
Second Stage	SECOND STAGE EXTENDED 8.14M BOOM LENGTH	2.7	2270	2270	2270
		3	2120	2090	2090
		3.5	1680	1680	1680
		4	1440	1420	1370
		4.5	1260	1240	1120
		5	1110	1070	910
		5.5	990	950	790
		6	880	800	670
		7	730	610	510
		7.82	630	520	430
		Third Stage	THIRD STAGE EXTENDED 10.31M BOOM LENGTH	4	1080
4.5	985			950	950
5	880			860	860
6	770			750	680
7	670			630	530
8	570			490	420
9	500			410	340
Fourth Stage	FOURTH STAGE EXTENDED 12.45M BOOM LENGTH	<4.5	790	780	780
		5	660	650	650
		6	520	500	500
		7	430	410	410
		8	380	360	360
		9	340	290	290
		10	310	260	260
		11	280	250	250
		12.16	260	210	210

Crane Specifications

Crane capacity	capacity:	2.9t x 2.5m
Max working radius	max:	12.16m
Max lifting height	approx:	12.52m
Rope length	max:	64m 1 fall, 32m 2 fall, 16m 4 fall
Dimensions	folded:	4285mm x 1280mm x 1695mm
Weight	unladen:	4040kg
Point loadings	Due to the many variables involved, point loadings are only available on request	
Hook speed	approx:	13.5m / min
Telescopic system	boom length:	3.65m - 12.45m
	telescoping speed:	8.79m / 38sec
	boom type:	Fully automatic 5 section pentagonal boom
Derricking angle/speed	approx:	0 - 80° / 21 seconds
Slewing angle/speed	approx:	360° (continuous) 2.4min (rpm)
Traction system	drive:	Hydraulic motor driven stepless speed changer
	travel speed:	2.8km/h
	gradability:	23°
	track ground length:	1750mm
	track ground pressure:	0.37 kg/cm ²
	track width:	300mm
Engine	manufacturer:	Maeda Cranes
	fuel:	Diesel / LPG / electric
	maximum output:	15.2KW, 2500RPM
	starting method:	Key / pull start
	tank capacity:	40L
Standard equipment	overwinding alarm, computer controlled intelligent voice warning system, radio remote control, intelligent throttle activation	
Optional equipment	Searcher hook attachment, low marking wheels	



Dimensions

