

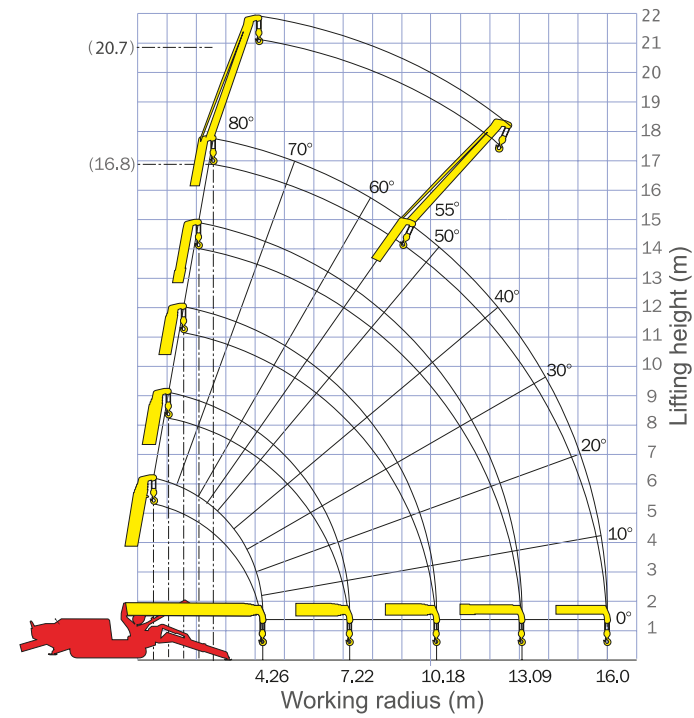
LIFT

MAEDAMC405 (3.8t x 2.7m)



- Pick and carry 500kg
- 3m fly jib extension
- Only 1400mm wide
- 16.8m normal working height
- Remote control option

Working Range



Fly Jib	
Boom angle (deg)	kg
72+	520
69	420
66	320
63	250
60	220
55	170



Crane Specifications

Crane capacity	capacity:	3.8t x 2.7m
Max working radius	max:	16m
Max lifting height	approx:	16.8m
Rope length	max:	82m 1 fall, 41m 2 fall, 20.5m 4 fall
Dimensions	folded:	4980mm x 1380mm x 1980mm
Weight	unladen:	5750kg
Point loadings	Due to the many variables involved, point loadings are only available on request	
Hook speed	approx:	18m / min
Telescopic system	boom length:	4.7m - 16.4m
	telescoping speed:	11.7m / 54sec
	boom type:	Fully automatic 5 section pentagonal boom
Derricking angle/speed	approx:	0 - 80° / 24.5 seconds
Slewing angle/speed	approx:	360° (continuous) 2.1min (rpm)
Traction system	drive:	Hydraulic motor driven, stepless speed changer
	travel speed:	3.3km/h
	gradability:	20°
	track ground length:	1720mm
	track ground pressure:	0.50 kg/cm ²
	track width:	320mm
Engine	manufacturer:	Maeda Cranes
	fuel:	Diesel / Electric
	maximum output:	21.4KW, 2400RPM
	starting method:	Key / pull start
	tank capacity:	60L
Standard equipment	overwinding alarm, computer controlled intelligent voice warning system, radio remote control, intelligent throttle activation	
Optional equipment	Searcher hook attachment, low marking wheels, onboard fly jib attachment, pick and carry facility	



First Stage

FIRST STAGE EXTENDED 4.7-7.7M BOOM LENGTH

Working radius m	<2.7	3.5	4	5	6	7	7.25
Outrigger Max kg	3830	3030	2580	2030	1680	1380	1330
Mid kg	3830	3030	2580	1880	1430	1160	1120
Min kg	3830	3030	2580	1680	1180	930	780

Second Stage

SECOND STAGE EXTENDED 10.65M BOOM LENGTH

Working radius m	3.5	4	5	6	7	8	9	10.2
Outrigger Max kg	3030	2580	2030	1680	1380	1130	880	580
Mid kg	2270	2090	1680	1420	1240	1070	950	800
Min kg	2270	2090	1680	1370	1120	910	790	670

Third Stage

THIRD STAGE EXTENDED 13.56M BOOM LENGTH

Working radius m	4	4.5	5	6	7	8	9	10	11	12	13.1
Outrigger Max kg	2230	1930	1730	1400	1180	1030	930	830	690	530	430
Mid kg	2230	1830	1630	1330	1080	880	730	530	480	430	330
Min kg	2230	1830	1630	1180	830	680	550	430	380	350	310

Fourth Stage

FOURTH STAGE EXTENDED 16.47M BOOM LENGTH

Working radius m	5	5.5	6	7	8	9	10	11	12	13	14	15	16
Outrigger Max kg	1130	950	910	760	650	600	550	490	440	380	320	260	210
Mid kg	1130	980	910	730	630	550	480	430	380	330	280	220	180
Min kg	1130	980	880	730	530	450	420	370	330	280	240	190	150

Dimensions

